

RESOLUTION NO.: 2021-09

SUBJECT: Resolution to Adopt and Appropriate the 2022 Public Health Budget

EFFECTIVE DATE: December 15, 2021

RESOLUTION OF THE EL PASO COUNTY
BOARD OF HEALTH

RESOLUTION TO ADOPT AND APPROPRIATE THE 2022 EL PASO COUNTY PUBLIC HEALTH BUDGET.

WHEREAS, pursuant to Sections 25-1-508 and 511, and Section 29-1-103, C.R.S., the El Paso County Board of Health ("Board of Health") has the power and duty to adopt a budget for El Paso County Public Health ("Public Health") for fiscal year 2022; and,

WHEREAS, Public Health has recommended that the Board of Health adopt a budget for fiscal year 2022 as indicated in Attachment's "A" and "B" hereto, and incorporated herein by reference; and,

WHEREAS, the Board of Health has conducted a public meeting to consider adoption of said 2022 budget, and has received and considered public input regarding said proposal;

NOW, THEREFORE, BE IT RESOLVED BY THE EL PASO COUNTY BOARD OF HEALTH:

1. That the Board of Health hereby adopts the fiscal year 2022 El Paso County Public Health Budget as indicated in Attachment's "A" and "B", which is incorporated herein by reference.
2. That the fiscal year 2022 El Paso County Public Health Budget may be amended from time to time by appropriate action of the Board of Health.

MOVED, SECONDED AND ADOPTED BY THE EL PASO COUNTY BOARD OF HEALTH AT ITS REGULAR MEETING HELD ON DECEMBER 15, 2021.
EL PASO COUNTY BOARD OF HEALTH

BY:  ATTEST BY: 
President Secretary

2022 Original Adopted Budget
El Paso County Public Health
Board of Health Meeting
December 15, 2021

Samantha Montmeny

Budget Supervisor/Health & Human Services

El Paso County Financial Services



2022 Original Adopted Budget

Revenue Estimates – Increased overall \$585,358

- El Paso County BoCC approved critical needs and increased support for personnel 3.5% COLA
- Radon Grant increase \$2,449

Expenditure Estimates – Increased overall \$561,680

- Personnel Cost – Increased \$561,680 – Additional Salary/Benefits 3.5% COLA

Planned Use of Fund Balance – Decrease of \$263,214

- Strategy remains to fund Critical Need positions above County support as phased in over the next year
- Total budgeted use of Fund Balance is \$263,214 – Still within the Fund Balance Policy minimum range of 18-21%



2022 Original Adopted Budget Summary

Revenue

El Paso County/EPC ARPA	\$ 6,027,058
State LPHA Funding/State ARPA	\$ 1,945,442
Federal Reimbursements/COVID Grants	\$ 6,388,442
Revenues from Program Specific Grants	\$ 11,490,410
Revenues from Licenses, Fees, and Permits	\$ 3,643,001
Revenue from Miscellaneous	\$ 66,590
Total Revenues	\$ 29,560,943

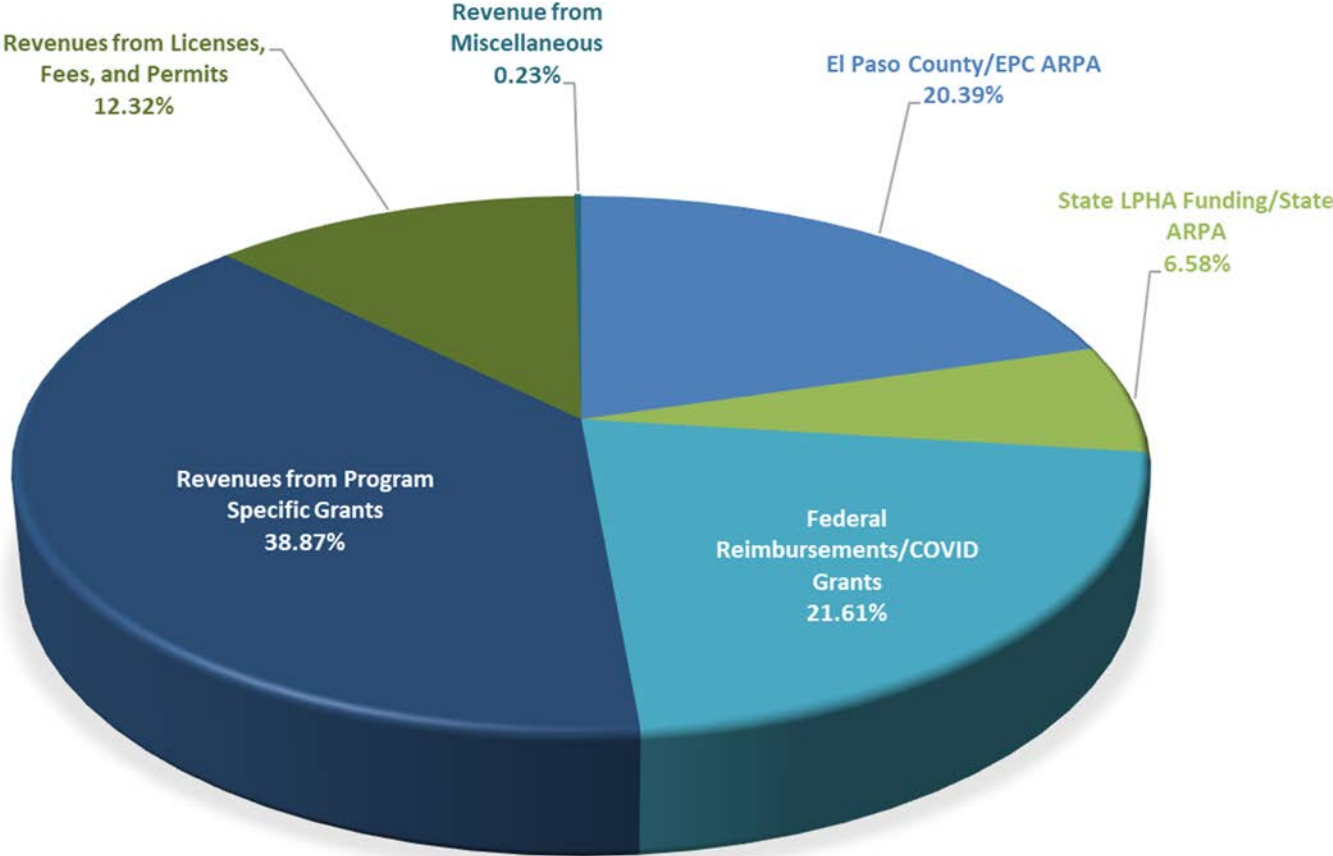
Expenditures

Personnel Expense	\$ 20,540,210
Operating	\$ 8,283,597
Capital Expense	\$ 1,000,350
Total Expenditures	\$ 29,824,157

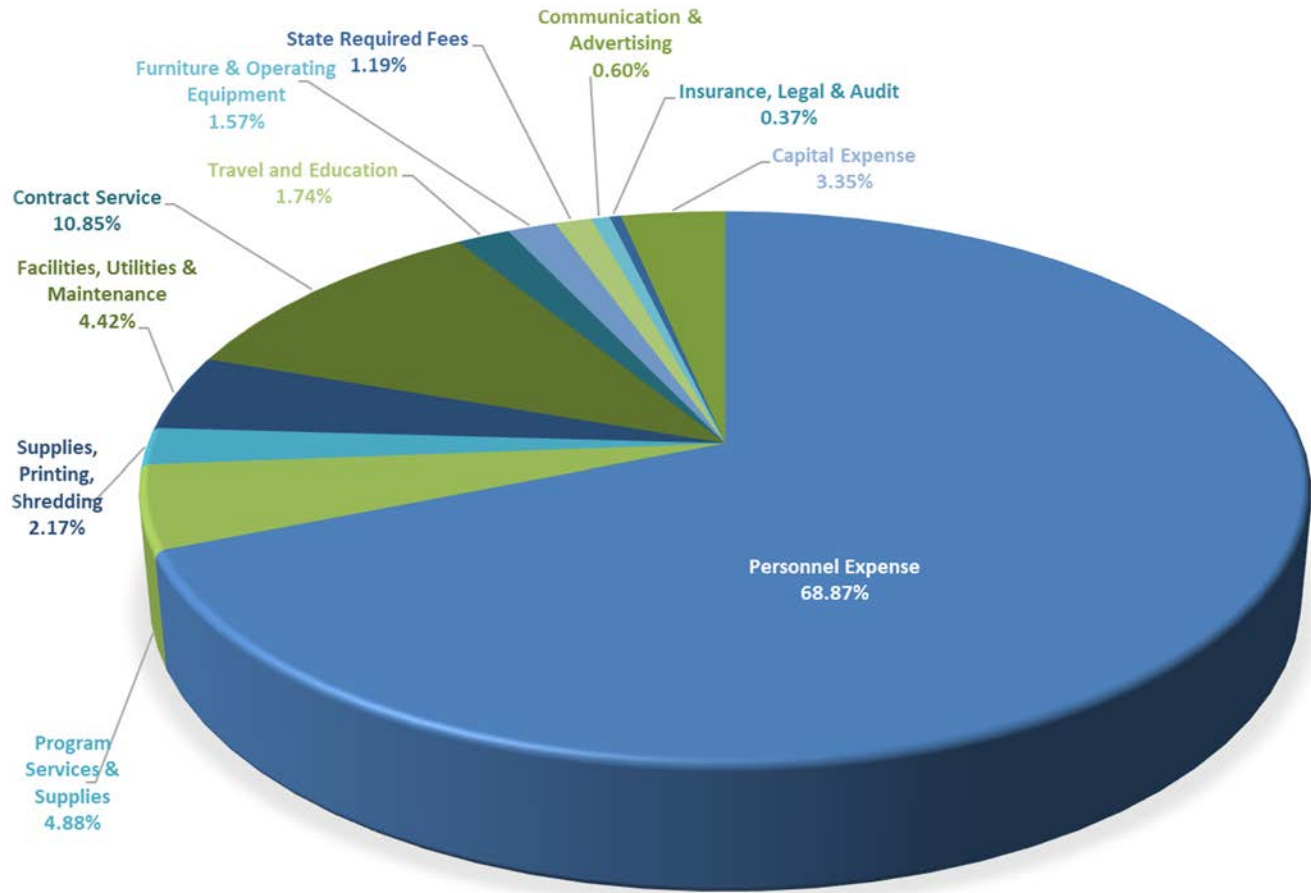
Net Change in Fund Balance \$ (263,214)



2022 Original Adopted Budget Revenue \$29,560,943



2022 Original Adopted Budget Expenditures \$29,824,157



Questions?



Attachment B

**El Paso County Public Health
2022 Original Adopted Budget Summary**

	<u>2021</u>	<u>2021</u>	<u>2022</u>	<u>2022</u>	<u>2022</u>
	Preliminary Balanced Budget	Original Adopted Budget	Preliminary Balanced Budget	Original Adopted Budget	Changes from Preliminary Balanced Budget
Revenue					
El Paso County/EPC ARPA	\$ 4,444,149	\$ 4,444,149	\$ 5,444,149	\$ 6,027,058	\$ 582,909
State LPHA Funding/State ARPA	\$ 960,796	\$ 960,796	\$ 1,945,442	\$ 1,945,442	\$ -
Other Intergovernmental Revenue	\$ 15,000	\$ 15,000	\$ -	\$ -	\$ -
Federal Reimbursements/COVID Grants			\$ 6,388,442	\$ 6,388,442	\$ -
Revenues from Program Specific Grants	\$ 12,024,775	\$ 12,024,775	\$ 11,487,961	\$ 11,490,410	\$ 2,449
Revenues from Licenses, Fees, and Permits	\$ 3,379,744	\$ 3,379,744	\$ 3,643,001	\$ 3,643,001	\$ -
Revenue from Interest Income	\$ -	\$ -	\$ -	\$ -	\$ -
Revenue from Miscellaneous	\$ 13,620	\$ 13,620	\$ 66,590	\$ 66,590	\$ -
Total Revenues	\$ 20,838,084	\$ 20,838,084	\$ 28,975,585	\$ 29,560,943	\$ 585,358
Expenditures					
Personnel Expense	\$ 15,688,254	\$ 15,837,749	\$ 19,978,530	\$ 20,540,210	\$ 561,680
Operating	\$ 5,911,908	\$ 5,868,900	\$ 8,283,597	\$ 8,283,597	\$ -
Capital Expense	\$ -	\$ -	\$ 1,000,350	\$ 1,000,350	\$ -
Total Expenditures	\$ 21,600,162	\$ 21,706,648	\$ 29,262,477	\$ 29,824,157	\$ 561,680
Net Change in Fund Balance	\$ (762,078)	\$ (868,565)	\$ (286,892)	\$ (263,214)	